



**VITRINITE**  
BRIGHTER COAL



# Stakeholder Engagement Plan

---

for Vulcan South

May 2022

*This report has been prepared solely for the benefit of Vitrinite Pty Ltd. Mining and Energy Technical Services Pty Ltd (METServe) accepts no liability for the use or interpretation of any information contained in this report for any other purpose other than intended, or for its use by any party other than the above named Client.*

### Document History and Status

Issue	Revision	Issued to	Qty	Date	Reviewed by
1	1 (Draft)	METServe	1	20/10/2020	D. McIntyre
2	2 (Draft)	METServe	1	7/03/2022	A. Basiaco
3	3 (Final Draft)	METServe	1	7/03/2022	D. Plucknett
4	4 (Final)	Vitrinite	1	10/03/2022	T. Morrissey/D.Moss

**Printed:** 17 May 2022  
**Last saved:** 17 May 2022  
**File ID:** 00283335  
**Project Manager:** Dave Moss  
**Name of Organisation:** Vitrinite Pty Ltd  
**Name of Project:** Vulcan South  
**Name of Document:** Stakeholder Engagement Plan  
**Document Version:** 004  
**Project Number:** VI011

<b>1</b>	<b>INTRODUCTION .....</b>	<b>1</b>
1.1	PROJECT OVERVIEW .....	1
1.1.1	Proponent.....	2
1.1.2	Project Timing and Development Stages.....	2
1.1.3	Workforce and Accomodation.....	2
1.1.4	Existing Land Use and Tenure .....	2
1.2	PURPOSE AND SCOPE OF THE STAKEHOLDER ENGAGEMENT PLAN .....	5
1.3	OBJECTIVES.....	5
<b>2</b>	<b>STAKEHOLDER ENGAGEMENT PLANNING .....</b>	<b>6</b>
2.1	IDENTIFICATION AND ASSESSMENT .....	6
2.2	STAKEHOLDER IDENTIFICATION .....	6
2.2.1	Landholders .....	8
2.2.2	Traditional Owners .....	8
2.2.3	Local Councils .....	8
2.2.4	Organisations with Infrastructure on the MLA.....	8
2.2.5	Nearby Businesses .....	9
2.2.6	State and Federal Regulators .....	9
2.2.7	Neighbouring Mining Operations.....	9
<b>3</b>	<b>STAKEHOLDER ENGAGEMENT ACTIVITIES.....</b>	<b>10</b>
3.1.1	Landholders .....	10
3.1.2	Traditional Owners .....	11
3.1.3	Local Council.....	11
3.1.4	Organisations with Infrastructure on the MLA.....	11
3.1.5	Nearby Businesses .....	11
3.1.6	State and Federal Regulators .....	11
3.1.7	Neighbouring Operations .....	11
3.1.8	Statutory Public Notification .....	11
3.2	COMMUNICATION CHANNELS .....	12
<b>4</b>	<b>ONGOING ENGAGEMENT .....</b>	<b>13</b>
<b>5</b>	<b>RECORDKEEPING, REPORTING AND REVIEW .....</b>	<b>14</b>
5.1	RECORDKEEPING.....	14

5.2	REPORTING .....	14
5.3	ANNUAL REVIEW.....	14
<b>6</b>	<b>ROLES AND RESPONSIBILITIES .....</b>	<b>15</b>
<b>7</b>	<b>REHABILITATION AND CLOSURE .....</b>	<b>16</b>
7.1	ENGAGEMENT AND CLOSURE PLANNING.....	16
7.2	ONGOING PRCP ENGAGEMENT .....	16

**TABLES**

Table 1	Land Tenure and Real Property Descriptions for the Project.....	3
Table 2	Stakeholder list by category and potential concerns.....	7
Table 3	Landholders / Reserves by Lot / Plan and Property Name .....	8

**FIGURES**

Figure 1	Project Location .....	4
----------	------------------------	---

**APPENDICES**

Appendix A	Stakeholder Register .....	A
------------	----------------------------	---

## **1 INTRODUCTION**

Mining and Energy Technical Services Pty Ltd (METServe) has been engaged by Vitrinite Pty Ltd (Vitrinite) to manage the environmental approvals process for Vulcan South (the Project). As part of the Project, Vitrinite will require a Stakeholder Engagement Plan (SEP) to be developed to ensure that relevant stakeholders are consulted about the Project, and stakeholder feedback is appropriately recorded, documented and considered throughout the Project planning process.

### **1.1 PROJECT OVERVIEW**

The Project is located north of Dysart and approximately 35 km south of Moranbah in Queensland's Bowen Basin (**Figure 1**). The Project lies to the immediate west of several established mining operations, including BHP's Peak Downs and Saraji mines.

The Project is located immediately to the south of Vitrinite's initial mining Project, the Vulcan Coal Mine (VCM), located on ML700060. The Project mining lease application area abuts ML700060 however proposed activities will be largely implemented separately.

The Vulcan hard coking coal target has been defined and selected for open cut development via 3 separate open cut pits that form the primary mining focus of the Project. The Project will operate for approximately nine years, including primary rehabilitation works, following a two year construction period and will extract approximately 13.5 Mt of Run of Mine (ROM) coal consisting predominately of hard coking coal with an incidental thermal secondary product at a rate of up to 1.95 Mtpa. The Project will target the Alex and multiple Dysart Lower coal seams. Truck and shovel mining operations will be employed to develop the pits. A mine infrastructure area (MIA) will be established along with a modular coal handling and preparation plant (CHPP), rail loop and train load-out facility (TLO) at a location between the northern and central pits. The CHPP will include tailings dewatering technologies to maximise water recycling and to produce a dry tailings waste product for permanent storage within active waste rock dumps. No wet tailings wastes are proposed and therefore no tailings dams are required.

At each of the three pits, out-of-pit waste rock dumps will be established prior to commencing in-pit dumping activities that will continue for the life of the operation. Ancillary infrastructure, including a ROM pad, offices, roads and surface water management infrastructure will be established to support the operation.

A realignment of the existing Saraji Road and services infrastructure to the eastern boundary of the proposed Mining Lease Application (MLA) area, adjacent to the existing rail easement, is also proposed in a number of locations. The re-alignment will occur within the MLA area.

In-pit dumping will fill the majority of the pit volumes during operations with the remaining final voids to be backfilled upon cessation of mining, resulting in the establishment of low waste rock dump landforms over the former pit areas. Following backfill of the final voids, the remaining material stored in the initial out-of-pit waste rock dumps will be rehabilitated in-situ.

The Project includes a small-scale highwall mining trial program in the north of the MLA. The trial will involve the establishment of 4 highwall mining benches across a number of hillsides to facilitate extraction of coal utilising a CAT HW300 highwall miner, or similar. The highwall mining trial will target up to 750 kt of coal which will be transported by truck to the Project CHPP via a dedicated haul road within the MLA area. The trial is scheduled to be completed within the first year of mining operations.

A Progressive Rehabilitation and Closure Plan (PRCP) has been prepared to meet obligations under the *Environmental Protection Act, 1994* as amended by the *Mineral Resources and Energy (Financial Provisioning) Act 2018 Act*. The PRCP describes the proposed final landform, post-mine land uses, rehabilitation planning information and a schedule of progressive rehabilitation activities.

### **1.1.1 Proponent**

Queensland Coking Coal Pty Ltd is owned by Vitrinite Pty Ltd. Queensland Coking Coal Pty Ltd is the Environmental Authority and Mining Lease applicant. Vitrinite is the proponent and will appoint a statutory operator.

### **1.1.2 Project Timing and Development Stages**

The Project is a small scale mining operation, with coal extraction planned for approximately eight years, followed by completion of primary rehabilitation activities in year nine. Construction of infrastructure associated with the mining operation, including the CHPP and the rail loop, is expected to be completed within 2 years. Realignment of sections of Saraji Road sections will occur as required while the project progresses.

### **1.1.3 Workforce and Accommodation**

The Project is anticipated to require a workforce of 190 personnel (both permanent employees and contractors). As such, it is classified as a "large resource project" under the *Strong and Sustainable Resource Communities Act 2017* (SSRC Act). It is anticipated that less than approximately one third of this workforce would be present on site at any one time due to shift and roster arrangements and the inclusion of off-site haulage positions in this total. The Project's workforce will be primarily sourced from the regional area (i.e. Isaac and Mackay regions) and make use of the existing accommodation camp facilities and private housing at Moranbah and Dysart. Whilst sourcing of local people will be prioritised, it is anticipated that a combination of regional workforce solutions (Drive-in / Drive-out (DIDO) from Mackay and Fly-in / Fly-out (FIFO) from Moranbah Airport) will be required.

For the purposes of this plan, it is assumed the workforce will reside in a mixture of accommodation facilities from camp (80%) to private residences (20%). It is assumed there will be a 50% / 50% split between Dysart and Moranbah. Travel to site from Dysart and Moranbah will be 80% bus/work vehicles and 20% private vehicles (approx.). There would be two 12 hour shifts per day, with crews operating on a 7 days on / 7 days off roster.

The following indicative workforce breakdown is anticipated:

- Staff – 30; and
- Mining contractors – 160

The Project will require a mining lease (ML) as well as environmental approvals under Queensland and Commonwealth legislation. A site specific Environmental Authority (EA) application will need to be submitted for approval in accordance with the Queensland *Environmental Protection Act 1994* (EP Act). It is anticipated that this will not trigger the requirement for a supporting Environmental Impact Statement (EIS).

The Project will also be referred to the Commonwealth Department of the Environment and Energy (DoEE) for approval under the *Environment Protection and Biodiversity Conservation Act 1999* (EPBC Act).

### **1.1.4 Existing Land Use and Tenure**

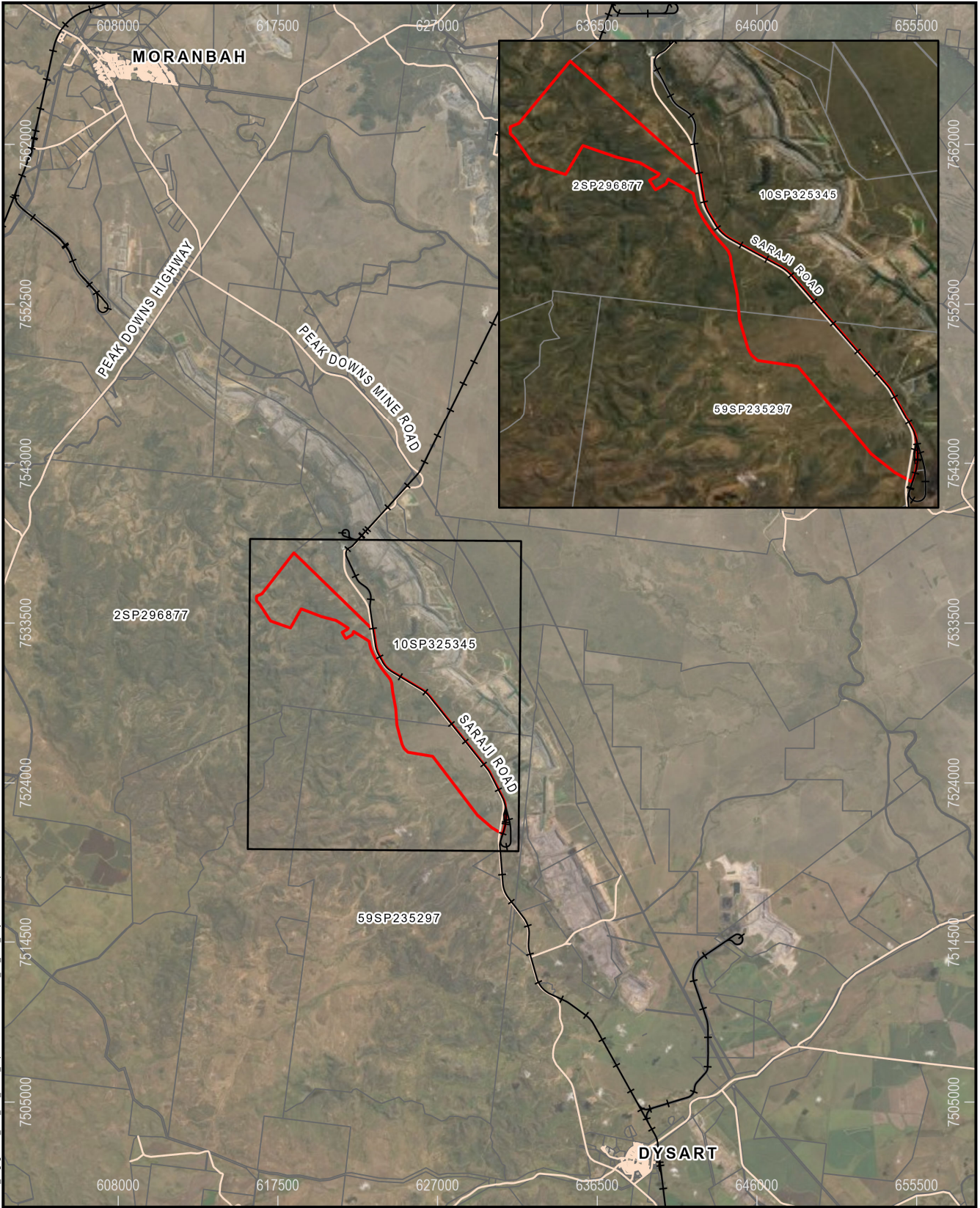
The Project MLA covers an area of approximately 3800 hectares (ha) and is situated over multiple underlying tenures (MDL 3039, EPC 1732 and 1234). The MLA area overlies adjacent portions of existing Exploration Permit Coal (EPC) 1732 and 1234 tenements (held by Qld Coal Aust No.1 Pty Ltd and Queensland Coking Coal Pty Ltd, respectively). Both companies hold an equal 50% share of the Mineral Development Licence (MDL). The Project disturbance footprint is 1756.7 ha.

A list of the properties', tenure, usage and owners/managers within the Project area are outlined in **Table 1**.

**Table 1 Land Tenure and Real Property Descriptions for the Project**

Lot/Plan	Tenure	Usage	Owner
2/SP296877	Lands Lease	Pastoral	O'Sullivan
59/SP235297	Lands Lease	Pastoral	O'Sullivan
72/SP137467	Reserve	Railway	Aurizon
Saraji Road	Road Licence	Road for public use	Isaac Regional Council
26/CNS125	Lands Lease	Norwich Park Branch Railway	Aurizon
2/CNS109	Lands Lease	Norwich Park Branch Railway	Aurizon
3/CNS109	Lands Lease	Saraji Mine Balloon Loop Railway	Aurizon

The Project falls within the Isaac Regional Council local government area. The region has a distinct mining influence with multiple significant coal mining operations in the immediate vicinity of the Project. A majority of the land within the MLA has been previously disturbed by agriculture and mining related activities. There are a small number of rural or residential dwellings located within 5 km of the southern extent of the Project activities.



Path: S:\Projects\1011\_VCP\_Stage2\ArcGIS\ProjectFiles\Projects\Stakeholder Engagement Plan and Social Impact Assessment\1011\_VS\_SEIP\_ProjectLocation.aprx


- Legend**
-  Railway
  -  Road
  -  MLA Boundary
  -  Cadastral Boundary

## Vulcan South Project Location



Scale: 1:330,000 (A4)

11/03/2022

 Datum: GDA2020  
Projection: MGA55

**FIGURE 1**

 **VITRINITE**  
BRIGHTER COAL

 **METSERVE**  
Mining & Energy Technical Services Pty Ltd

Source: State of Queensland (Department of Resources) 2021-2022, Vitrinite 2022, METServe 2022, Earthstar Geographics.



## **1.2 PURPOSE AND SCOPE OF THE STAKEHOLDER ENGAGEMENT PLAN**

The purpose of the Project SEP is to assist in the planning, management and review of stakeholder engagement activities. Through the SEP, Vitrinite aims to:

- Build and maintain effective relationships with its stakeholders; and
- Maintain its social license to operate.

The Project SEP is a live and iterative document that:

- Identifies relevant stakeholders across the life of the Project; initially during the approvals phase but also during post approval operations and rehabilitation and closure phases;
- Identifies appropriate engagement approaches, activities and timeframes for these activities, both during the approvals phase and post approval phases; and
- Details the requirements for recording, tracking and analysing consultation activities for reporting in the approval application, and for managing stakeholder concerns.

## **1.3 OBJECTIVES**

The SEP aims to provide Vitrinite with a practical and ongoing management tool for effective stakeholder engagement and to assist in building and maintaining relationships, trust and credibility with the relevant groups.

The objectives of the SEP include:

- Identify and record key stakeholders;
- Identify challenges and opportunities;
- Establish and implement communication and consultation practices that promote an ongoing relationship with stakeholders;
- Provide timely and accurate information to stakeholders;
- Provide convenient and identifiable avenues for feedback from stakeholders;
- Record and respond to any complaints in a timely manner; and
- Facilitate consultation feedback and input into mine rehabilitation and closure plans.

## **2 STAKEHOLDER ENGAGEMENT PLANNING**

This SEP outlines how stakeholder engagement will be planned, managed and reviewed. It has been developed based on the identification and assessment of stakeholders, issues, opportunities, risks, concerns and interests within the Project's area of influence and impact.

### **2.1 IDENTIFICATION AND ASSESSMENT**

Identification of stakeholders that have an interest and influence in the Project's approval, construction, operation and eventual rehabilitation and closure is based on their proximity, dependency, representation, responsibility and strategic intent and includes relevant Government and non-Government development organisations. The process includes:

- Identify and assess issues, opportunities and associated risks, including access to resources;
- Identify stakeholder concerns and interest gathered through a variety of mechanisms including direct consultation; and
- Assess the impact of the Project's activities within the area of influence, including the social aspect of site closure.

### **2.2 STAKEHOLDER IDENTIFICATION**

The identification of stakeholders is significant to the Project's longevity and sustainability. It is also practical to be able to identify and analyse the role and involvement that particular stakeholders will have throughout the life of the Project. As such, stakeholders have been classified into two categories (as defined under section 38 and section 41 of the EP Act) depending on the predicted level of Project impact, perceived level of stakeholder involvement on site activities, and the perceived level of interest in site activities or the outcomes of decisions. These two categories (and corresponding EP Act definitions) include:

1. **Affected Stakeholder:** Under section 38 of the EP Act this includes:
  - A person mentioned in subsection (2) for the operational land or any land joining it. This includes (amongst others) the registered proprietor/s of any freehold land, the registered holder/s of any land that is held from the State, any holder/s or applicant/s of mining tenures or other resource related tenures, trustees of any land under the *Nature Conservation Act 1992* or *Land Act 1994*, and holders of any unallocated State land, State forests or Conservation parks or State Controlled Roads;
  - Registered native title body corporates, claimants or representative Aboriginal/Torres Strait Islander body; or
  - A relevant local government.
2. **Interested Stakeholder:** Under section 41(3)(b) of the EP Act this includes an unincorporated community or environmental body with a financial or non-financial interest in the local government area that the operational land is in.

Categorising stakeholders as above allows for targeted planning, assessment and reviewing of stakeholder consultation practices, feedback, schedules and timing.

**Table 2** below lists relevant stakeholders according to the definitions under section 38 and section 41 of the EP Act, as well as a summary of perceived potential interests in the Project. **Appendix A** presents a register of completed engagement activities, including those for other components of the Vitrinite's projects in the area, the VCM and the Bulk Sample Project (BSP).

**Table 2 Stakeholder list by category and potential concerns**

Stakeholder Group	Potential Interests
<b>Affected Stakeholders</b>	
Underlying Landholders	<ul style="list-style-type: none"> <li>• Lawful management of the land</li> <li>• Lawful operation of the project</li> <li>• Management of offsite impacts (particularly surface waters and groundwater)</li> <li>• Land rehabilitation and post-mine land uses</li> <li>• Weed control</li> <li>• Site access</li> <li>• Unauthorised access controls</li> </ul>
Adjacent Landholders	<ul style="list-style-type: none"> <li>• Noise and dust emissions</li> <li>• Blasting overpressure and vibration</li> <li>• Management of offsite impacts (particularly surface waters and groundwater)</li> <li>• Quality of mine rehabilitation</li> <li>• Offsite impacts on land capability</li> <li>• Lighting emissions</li> <li>• Work opportunities</li> <li>• Land acquisition process</li> <li>• Transport and road impacts</li> <li>• Fences and gates</li> </ul>
Traditional Owners	<ul style="list-style-type: none"> <li>• Disturbance of cultural heritage sites and artefacts</li> <li>• Management of cultural heritage sites and artefacts</li> <li>• Access to land for cultural purposes</li> <li>• Employment opportunities</li> </ul>
Local Council	<ul style="list-style-type: none"> <li>• Compliance with development and planning conditions</li> <li>• Re-alignment of IRC road infrastructure and associated approval processes</li> <li>• Support for community and local business</li> <li>• Engagement with stakeholders</li> <li>• Impact of mine closure</li> <li>• Information on significant variations to Project</li> <li>• Worker and contractor accommodation impacts</li> <li>• Social infrastructure impacts</li> </ul>
Stakeholders with infrastructure within the Proposed MLA	<ul style="list-style-type: none"> <li>• Interaction with and effects on infrastructure</li> <li>• Possible relocation requirements</li> <li>• Continuity of service</li> </ul>
Stakeholders with commercial operations within the proposed MLA	<ul style="list-style-type: none"> <li>• Interaction with and effects on infrastructure and operations</li> <li>• Possible relocation requirements</li> <li>• Continuity of operations</li> </ul>
<b>Interested Stakeholders</b>	
Queensland Department of Environment and Science (DES)	<ul style="list-style-type: none"> <li>• EA application and PRCP</li> <li>• Environmental assessments and mitigation measures</li> <li>• Environmental management plans</li> <li>• Mine rehabilitation</li> </ul>
Queensland Department of Natural Resources, Mines and Energy (DNRME)	<ul style="list-style-type: none"> <li>• Mining Lease application</li> <li>• Water supply and water infrastructure</li> <li>• Compliance with operational plans and safety</li> <li>• Mine closure</li> </ul>

Stakeholder Group	Potential Interests
Queensland Department of Transport and Main Roads (DTMR)	<ul style="list-style-type: none"> <li>Transport and road impacts</li> <li>Transport Impact Assessment (TIA)</li> <li>Pavement Impact Assessment (PIA)</li> <li>Associated contributions</li> <li>Road Use Management Plan</li> </ul>
Commonwealth Department of the Environment and Energy (DoEE)	<ul style="list-style-type: none"> <li>EPBC Act referral</li> <li>Assessment of MNES, values, impacts and mitigation measures</li> </ul>
Downstream water users (BMA)	<ul style="list-style-type: none"> <li>Impacts on local and regional surface and groundwater</li> <li>Potential flooding impacts and impacts on critical infrastructure</li> </ul>

The Project is a small scale, short term coal project located within a well-established coal mining region of Queensland. It is proposed on disturbed land immediately adjacent to a number of well-established large scale coal mining Projects. Based on this and limited social impacts determined to be associated with the Project, the need for broad community engagement has been determined not to be required. Representative bodies for the community (IRC, government agencies) will and have been consulted and the general public will have the opportunity to comment on the EA application and PRCP as part of the EA application assessment process. Vitrinite consider this to be an appropriate level of engagement.

### 2.2.1 Landholders

Underlying landholders are described in **Table 3**.

**Table 3 Landholders / Reserves by Lot / Plan and Property Name**

Lot / Plan	Landholder / Reserve	Property Name
<b>Underlying Landholders/ Reserves</b>		
• 26 CNS125	Aurizon Holdings Limited	Norwich Park Branch Railway
• Saraji Road	Isaac Regional Council	Saraji Road Reserve
• 2 SP296877	Robert A & Raye M O'Sullivan	Saraji Station

### 2.2.2 Traditional Owners

The Barada Barna People (QUD380/08), represented by the Barada Barna Aboriginal Corporation RNTBC ICN 8343 (BBAC), are the native title holders for the broader project area, and the 'Aboriginal party' for the Project under the Aboriginal Cultural Heritage Act 2003 (Qld).

### 2.2.3 Local Councils

The relevant local council is the Isaac Regional Council.

### 2.2.4 Organisations with Infrastructure on the MLA

The following organisations presently own and / or operate infrastructure on the proposed MLA:

- Aurizon;
- IRC;
- Telstra;
- Dyno Nobel Asia Pacific Ltd;

- Kalari Pty Ltd;
- Saraji Station; and
- BHP Billiton Mitsubishi Alliance (BMA) Pty Ltd.

#### **2.2.5 Nearby Businesses**

Businesses in close proximity to the proposed Project presently include:

- Dyno Nobel Asia Pacific Ltd;
- Kalari Pty Ltd;
- BHP Billiton Mitsubishi Alliance (BMA) Pty Ltd; and
- Saraji Station.

#### **2.2.6 State and Federal Regulators**

Relevant State and Federal regulatory agencies include:

- Queensland Department of Environment and Science (DES);
- Queensland Department of Natural Resources, Mines and Energy (DNRME);
- Queensland Department of Transport and Main Roads (DTMR); and
- Commonwealth Department of the Environment and Energy (DoEE).

#### **2.2.7 Neighbouring Mining Operations**

BMA own the neighbouring Peak Downs and Saraji coal mines.

### **3 STAKEHOLDER ENGAGEMENT ACTIVITIES**

Stakeholder engagement activities (including frequency of engagement) have been identified for the various stakeholders discussed above, and once executed, are included in the Project's Stakeholder Register (refer **Appendix A**).

The level of stakeholder engagement will:

- Be based on the goals / objectives of the engagement program and effectiveness of the technique in reaching the target audience; and
- May vary considerably depending on the level of interest and impact the stakeholder has.

The methods of stakeholder engagement that have been considered include:

- Face to face meetings;
- Scheduled and routine conferences (monthly, quarterly, annual, etc.);
- Telephone meetings;
- Workshops; and / or
- Newsletters and email correspondence.

Regardless of the stakeholder group or method of engagement, all engagement will apply the following principles:

- Transparent – Open and honest in engagement activities, setting expectations;
- Realistic – Set clear objectives and understanding of what is to be achieved out of the engagement;
- Inclusive – Identify stakeholders and provide meaningful opportunities for them to engage;
- Respectful – Listen and acknowledge the needs of stakeholders, different opinions and perspectives; and
- Responsive – Consider and respond to issues and concerns, providing feedback to stakeholders.

#### **3.1.1 Landholders**

Underlying and adjacent landholders have been identified as Affected Project stakeholders.

Project Engagement activities will involve the following:

- Initial telephone contact between the Project Manager and the landholder;
- Round 1 - individual face-to-face meetings to discuss:
  - Draft Project description;
  - Environmental approvals and tenure processes and scheduling;
  - Environmental baseline surveys and monitoring undertaken to date and baseline results;
  - Approach to impact assessment and management of noise, dust, weed management, property disturbance etc.;
  - Approach to progressive rehabilitation and closure planning; and
  - Future communications protocol.
- Round 2 - individual face-to-face meetings to discuss:
  - Final Project description proposed for approval;
  - Results of impact assessment - particularly management of noise, dust and weeds, and closure impacts;
  - Proposed project rehabilitation and final landform / land use; and
  - Further information on the environmental approvals process and opportunities to comment during the public notification process.

### **3.1.2 Traditional Owners**

The Proponent and the BBAC have entered into an indigenous land use agreement (body corporate agreement) (ILUA) in respect of the Vulcan Project, which is in the process of being registered with the National Native Title Tribunal. The ILUA also contemplates the management of Aboriginal cultural heritage under the Aboriginal Cultural Heritage Act 2003 (Qld). Engagement will continue in accordance with the ILUA.

### **3.1.3 Local Council**

The Project is located within the Isaac Regional Council and engagement will focus on the Project's potential impacts to the surrounding region (including infrastructure and transport impacts). IRC data has been interrogated as part of the social impact assessment, and impacts to local businesses, community groups, worker accommodation in Dysart and Moranbah, social infrastructure (health, education and emergency services) are considered to be limited.

Consultation with Isaac Regional Council directly in relation to the proposed realignment of IRC's Saraji Road and provision of regular Project updates has been ongoing and is documented in **Appendix A**. This includes approval applications requirements for the off-lease component of the road realignment to the north of the proposed MLA.

### **3.1.4 Organisations with Infrastructure on the MLA**

Direct consultation will occur with each organisation that operates infrastructure on the proposed MLA. Each party will be engaged separately via e-mail, phone and face-to-face meetings to discuss current infrastructure operations, interactions with the project, realignment requirements and ongoing management requirements.

### **3.1.5 Nearby Businesses**

Direct consultation will occur with each organisation that operates businesses on or adjacent to the proposed MLA. Each party will be engaged separately via e-mail, phone and face-to-face meetings to discuss current business operations, interactions with the project, potential relocation requirements and ongoing management requirements.

### **3.1.6 State and Federal Regulators**

Engagement with State and Federal regulators will occur throughout the Project planning assessment and execution phases. Engagement will be via e-mail, phone and face-to-face meetings (including presentations of Project information). Engagement will typically be focussed around a number of approval process stages including:

- Introduction of proponent and project concept (including clarification of approval processes and assessment / application requirements);
- Discussion of baseline assessment findings;
- Discussion of impact assessment findings and management and mitigation proposals;
- Application pre-lodgement;
- Application assessment consultation, information requests, notification processes; and
- Compliance and reporting.

### **3.1.7 Neighbouring Operations**

BMA operates the Peak Downs mine immediately to the east of the Project MLA. BMA will be engaged via e-mail, phone and face-to-face meetings.

### **3.1.8 Statutory Public Notification**

Prescribed statutory public notification periods form part of the ML, EA and EPBC referral application and approvals process. During these periods, approval application material will be advertised in various newspapers, made available on the Vitrinite website and on the DES and DoEE websites for the public to respond to by way of written submissions to the regulators.

### **3.2 COMMUNICATION CHANNELS**

A Vitrinite channel of communication will be established linking Project staff / management to external stakeholders who wish to comment on (or ask questions about) the Projects various components and / or impacts. Information will also be included on the Vitrinite website and updated as necessary along with instructions on how external stakeholders can make a submission to DoEE, DNMRE, DES and / or Vitrinite during the public notification process.

Vitrinite will distribute information to stakeholders as required and in consideration of confidentiality requirements as well as releasing information as required in accordance with its public notification obligations.

Two-way communication is fundamental to engagement with stakeholders. Engagement and feedback opportunities will be actively sought to ensure that stakeholders are comfortable with the level of Project knowledge and so that any management of enquiries, complaints or issues can be handled efficiently. Feedback from Project consultation activities will be met within appropriate timeframes as follows:

- Telephone or face-to-face enquiries about current Project activities will aim to be responded to by the next business day;
- Telephone or face-to-face enquiries about non-current (i.e. proposed) Project activities will aim to be responded to within three business days; and
- Email and letter enquires within five business days from date of receipt of correspondence.

Vitrinite's neighbouring VCM has a proposed a complaint process based on the one currently in place for Vitrinite's approved Bulk Sample Project (BSP) as conditioned by the environmental authority (EA). This system will be applied to the full Project, of which the BSP and VCM are smaller components. It will document criticism or concern over perceived environmental issues and will be available for consultation by the relevant stakeholders. The complaints register will record:

1. name, address and contact number of the complainants;
2. time and date of the complaint;
3. reasons for the complaint;
4. investigations undertaken;
5. conclusions formed;
6. actions taken to resolve the complaint;
7. any abatement measures implemented; and
8. person responsible for resolving the complaint.

Should the Project be required to have any further or different complaint procedures through conditions from an administering authority, they will of course take precedence to ensure compliance of the project.



#### **4 ONGOING ENGAGEMENT**

Stakeholders will continue to be engaged during the project construction, operations and closure phases. Specific consultation in relation to the Progressive Rehabilitation and Closure Plan (PRCP) is discussed in **Section 7**.

Affected stakeholders will be advised of any relevant Project changes that are proposed to occur throughout the Project execution. Relevant Project changes are considered to be those that significantly change the information, decisions and agreements that had been discussed in prior engagement or approval notification activities.

## **5 RECORDKEEPING, REPORTING AND REVIEW**

A record of all stakeholder engagement (past, ongoing or prospective) will be maintained in order to verify stakeholder engagement conducted, address stakeholder concerns in a timely manner and manage the Project approval process to acknowledge and (where feasible) incorporate stakeholder feedback.

**Appendix A** provides relevant engagement records documented to date (at time of publication). This document details the consultation that has occurred through the previous components of Vitrinite's projects in the area, the VCM and the BSP.

### **5.1 RECORDKEEPING**

The Vitrinite Project Manager and / or personnel responsible for stakeholder engagement, as well as any staff responsible for holding a Project email and / or telephone number, will be accountable for implementing Vitrinite's record keeping process, including:

- Direct data entry into records; and
- Advising any other supporting staff responsible for inputting stakeholder engagement data into formal records.

### **5.2 REPORTING**

For each stakeholder engagement record generated, the following will be reported:

- Consultation date(s);
- The stakeholders consulted;
- Consultation type (face-to-face meeting, community forum, workshop, quarterly meetings, etc.);
- Information provided;
- Topics of discussion; and
- Outcomes and ongoing commitments.

### **5.3 ANNUAL REVIEW**

This SEP (including the Stakeholder Register) will be reviewed annually (post Project approval) and updated accordingly to ensure that:

- Any updated legislation, standards and other reference information is incorporated into the SEP and any supporting Vitrinite management systems; and
- Vitrinite's engagement process throughout the Project's operations and rehabilitation and closure phases remains efficient, informative and fit for purpose in accordance with accepted industry standards and legislative requirements.

## **6 ROLES AND RESPONSIBILITIES**

The Vitrinite Project Manager is primarily responsible for the planning and implementation of stakeholder engagement activities for the Project. Where applicable, engagement will build on existing engagement between stakeholders and Vitrinite personnel. Accordingly, those involved with existing engagement tasks will play an ongoing role in the implementation of the SEP. Other Vitrinite personnel involved in stakeholder engagement are identified in the Stakeholder Register (**Appendix A**).

---

## **7 REHABILITATION AND CLOSURE**

### **7.1 ENGAGEMENT AND CLOSURE PLANNING**

A PRCP is required to be developed for the Project in accordance with the Queensland Government's Mined Land Rehabilitation Policy. The PRCP must be submitted as part of the site-specific EA application for a new mining activity and is required to comply with requirements as set out in DES' *Progressive Rehabilitation and Closure Plans Guideline (PRCP Guideline)* (effective as at 1 November 2019).

As part of the PRCP planning process, and in accordance with section 126C(1)(c)(iii) and (iv) of the EP Act as well as DES' PRCP Guideline, Vitrinite must demonstrate that sufficient effort has been made in engaging stakeholders in the preparation of the PRCP. The following three components will be considered:

- The identification of relevant stakeholders;
- Identification of a Stakeholder Engagement Register identifying the engagement carried out in developing the PRCP (it may refer to the Stakeholder Engagement Register appended to this document); and
- A description of ongoing (rehabilitation related) engagement proposed during Project operations and closure activities (note discussion of this in **Section 7.2** below).

The above PRCP planning requirements have been considered in the development of this SEP, with rehabilitation and closure planning forming a component of the Project's stakeholder engagement process. **Appendix A** provides relevant engagement records documented to date.

### **7.2 ONGOING PRCP ENGAGEMENT**

The *Progressive Rehabilitation and Closure Plans Guideline* (PRCP Guideline), requires ongoing engagement with relevant stakeholders to determine any changes in stakeholder perspectives and to communicate any relevant closure related changes proposed by Vitrinite. Given the short duration of the proposed Project (eight years of coal extraction), it is considered unlikely that significant changes to the proposed rehabilitation activities will occur. Similarly, it is considered that stakeholder perspectives on rehabilitation are unlikely to change, particularly if the proposed rehabilitation activities are implemented successfully.

Nonetheless, Vitrinite commits to providing relevant stakeholders with copies of annual rehabilitation progress reporting and will utilise this mechanism for communication of any proposed changes to the PRCP and to obtain feedback from stakeholders for consideration in ongoing planning and activities. Should significant amendment of the PRCP be proposed, stakeholders will be engaged as part of the amendment process.

**APPENDIX A**

**STAKEHOLDER REGISTER**

Consultation date	Consultation type	Stakeholder	Location	Attendees	Information Provided	Topics of discussion	Outcomes/ ongoing commitments
20 March 2019	Meeting	O'Sullivan's (Saraji and Cherwell)	Cherwell Station	Mike Cavanaugh, O'sullivan family	Planned location of water bores	Groundwater bores	Ongoing discussions around borehole conversion if suitable
30 April 2019	Meeting	DES	DES Office Emerald	Allison Sinclair, Mick Callan, Dave Moss, Heath Carney,	Vulcan Bulk Sample Project and Vitrinite introduction, VCP introduction	Bulk Sample Project Description, Vulcan Project introduction	BSP EA application planning to continue. Prelodgement meeting to be held in a few months prior to EA application submission
16 May 2019	Meeting	Barada Barna People	Vitrinite Office, Brisbane	Nick Williams, Ryan Welker, Directors and members of Barada Barna Aboriginal Corporation, legal representatives	Project update presentation	Project update and preliminary ILUA discussions	Ongoing dialogue towards ILUA execution
21 May 2019	Meeting	DNRME (Coal Hub)	Rockhampton	Mick Callan, Nick Williams, DNMRE representatives	Project overview presentation	Project update	Ongoing consultation regarding project development
18 June 2019	Meeting	Barada Barna People	McCullough Robertson Lawyers	Nick Williams, Ryan Welker, Directors and members of Barada Barna Aboriginal Corporation, legal representatives	Project update presentation	ILUA meetings, Info sessions, execution meeting	Ongoing dialogue towards ILUA execution

Consultation date	Consultation type	Stakeholder	Location	Attendees	Information Provided	Topics of discussion	Outcomes/ ongoing commitments
11 July 2019	Meeting	DNRME	DNRME Offices Rockhampton	Alex Grundy, Deb Toon, Mick Callan, Dave Moss	Overview of Bulk Sample Project, introduction to VCP	MDL Application requirements discussed and agreed. VCP and future opportunities broadly discussed	BSP EA and MDL application submissions to proceed as planned, Further updates on VCP to be provided.
31 July 2019	Meeting	Dyno Nobel	Vitrinite Office, Brisbane	John Stevens and Simon Masters (Dyno) Mick Callan, Nick Williams, Ryan Welker	Detailed project update	project interactions, update on project development	ongoing consultation
10 September 2019	Meeting	Barada Barna People	McCullough Robertson Lawyers	Nick Williams, Ryan Welker, Directors and members of Barada Barna Aboriginal Corporation, legal representatives	Project update presentation	ILUA meetings, Info sessions, execution meeting	Ongoing dialogue towards Ilua execution
11 September 2019	Meeting	DES	DES Office - Gladstone	Chris Loveday, Nicholas Williams, Mick Callan, Dave Moss	VCP overview, values and impacts, approach to PRCP	Vulcan Project approval strategy, phases, discussed likelihood of EIS and proposal to submit well informed EA application, identified environmental values and impacts. Approach to PRCP	Ongoing consultation around submission

Consultation date	Consultation type	Stakeholder	Location	Attendees	Information Provided	Topics of discussion	Outcomes/ ongoing commitments
11 September 2019	Meeting	RG Tanner	RG Tanner Gladstone	RG Tanner, Nicholas Williams, Mick Callan, Dave Moss	VCP overview	Port operations and allocations	Ongoing consultation
24 October 2019	Meeting	Landholder - O'Sullivan's (Saraji and Cherwell)	Saraji Station			Land purchase options / Project Update	Ongoing consultation
30 October 2019	Teleconference	DES	Teleconference Brisbane-Emerald	Allison Sinclair, Gillian Naylor, Jessica Edgar, Dave Moss	PRCP approach	PRCP approach, confirmation of submission requirements, query guideline availability - timing, scope of supporting assessments	Ongoing consultation once guideline available and understood.
4 November 2019	Meeting	BMA/BHP	BHP Office, Brisbane	Mick Callan, Dave Moss, Alan Hocking	Provided surface water modelling and flood assessment	Water supply, data sharing, project update, flood modelling	BHP to review and provide comment
7 November 2019	Meeting	Landholder - O'Sullivan's (Saraji and Cherwell)	Cherwell Station	Mick Callan, Nick Williams, O'Sullivan Family	Project update, discuss land owner plans for property	Land purchase options / Project update	Ongoing negotiation
20 November 2019	Meeting	Isaac Regional Council	Moranbah	Mick Callan, Rob Machill, Sean Robinson	Project update and draft road relocation plans	Road relocation discussions and approval process	IRC to provide draft compensation agreement for road relocation



Consultation date	Consultation type	Stakeholder	Location	Attendees	Information Provided	Topics of discussion	Outcomes/ ongoing commitments
17 December 2019	Meeting	BMA	BMA offices Brisbane	Alan Hocking, James Zhan, Julian Orth, Mick Callan, Dave Moss	Project Overview, water supply options	Discussed water supply options, VCP flood mapping and potential for use of mine affected water	Ongoing consultation and water supply discussion, provision of VCP project flood mapping for BMA incorporation and consideration against critical infrastructure.
13 January 2020	Meeting	Barada Barna	McCullough Robertson Lawyers	Nick Williams, Ryan Welker, Directors and members of Barada Barna Aboriginal Corporation, legal representatives	Project update presentation	ILUA meetings, Info sessions, execution meeting	Ongoing dialogue towards ILUA execution
28 January 2020	Meeting	Barada Barna	Chermside Bowls Club, 468 Rode Road, Chermside	Nick Williams, Ryan Welker, Directors and members of Barada Barna Aboriginal Corporation, legal representatives	Project update presentation	ILUA meetings, Info sessions, execution meeting	Ongoing dialogue towards ILUA execution
29 January 2020	Meeting	Barada Barna	Ipswich Best Western Hotel, 51/55 Warwick Street, Ipswich	Nick Williams, Ryan Welker, Directors and members of Barada Barna Aboriginal Corporation, legal representatives	Project update presentation	ILUA meetings, Info sessions, execution meeting	Ongoing dialogue towards ILUA execution

Consultation date	Consultation type	Stakeholder	Location	Attendees	Information Provided	Topics of discussion	Outcomes/ ongoing commitments
04 February 2020	Meeting	Mines Inspectorate	Dysart	Nick Williams, Ryan Welker, Mick Callan, Mike Cavanaugh, James Richardson, large contingent of QLD mines inspectors	Powerpoint presentation outlining the Vulcan project, development plans and SHMS development plans	Project update, initial consultation on SHMS development	Presentation well received by inspectors, Vitrinite committed to maintaining open dialogue as the project develops
13 February 2020	Meeting	Aurizon	Vitrinite office, Brisbane	Mick Callan, James Richardson, Nick Remmelt, Tiffany Bruce	Project presentation, draft rail protection plan	Project update and discuss rail interactions	Aurizon to provide feedback on management plan and arrange follow up meetings
17 February 2020	Meeting	BMA	BMA offices Brisbane	Alan Hocking, James Zhan, Mick Callan, Dave Moss	VCP Overview, water supply options	Discussed water supply options, confirmation of no BMA concern on impacts of VCP flood modelling on critical infrastructure at BMA operations	Ongoing consultation and water supply discussion
20 February 2020	Meeting	IRC	IRC Office Moranbah	Steve Voke, IRC personnel, Mick Callan, James Richardson, Dave Moss	Vulcan Project update, Saraji Road alignment	compensation agreements, Road Use Management Plan, approval mechanisms under the Land Act. Opportunities to present to Council	Ongoing consultation

Consultation date	Consultation type	Stakeholder	Location	Attendees	Information Provided	Topics of discussion	Outcomes/ ongoing commitments
21 February 2020	Meeting	DES	DES Emerald Office	Jessica Edgar, Gillian Naylor, Barbara van der Pol	Project update and approval process discussion	Vulcan project changes, Vulcan South, PRC Plan/Environmental Authority application	Ongoing consultation
30 March 2020	Teleconference	DES	N/A	Tenille Nielsen, Emma Burgess, Keeley Hartzler	Project updates and amendments	Vulcan project proposal discussion	Ongoing consultation
2 June 2020	e-mail correspondence	DES	N/A	Chris Loveday/ Dave Moss/ Mick Callan/ Kate Bennink	Vulcan Project broad approval strategy incorporating Vulcan South	Vulcan project phasing and approvals approach	Ongoing consultation
5 June 2020	Meeting	DES	DES Office Gladstone	Chris Loveday/Dave Moss/Mick Callan	Vulcan Project broad approval strategy	Preliminary project discussion	Ongoing consultation
23 June 2020	e-mail correspondence	DES	N/A	Chris Loveday/ Dave Moss/ Mick Callan/ Kate Bennink	Vulcan Project broad approval strategy – response from DES	Brief commentary on proposed approach and commitment to further consultation	Ongoing consultation
February - November 2021	e-mail correspondence	DES	N/A	Chris Loveday/Aiyisha McLean/Pauline Gregory/ Kathleen Ahern/Kate Bennink	Vulcan South preliminary assessment and EIS decision application	Vulcan South EIS decision application	Ongoing consultation

Consultation date	Consultation type	Stakeholder	Location	Attendees	Information Provided	Topics of discussion	Outcomes/ ongoing commitments
11 February 2021	Teleconference	DES	N/A	Chris Loveday/Dave Moss	EIS decision application	EIS decision application	Ongoing consultation
19 August 2021	Meeting	Landholder - O'Sullivan's (Saraji and Cherwell)	Vulcan Mine Site	Kerry O'Sullivan, Mick Callan, Nick Williams, Tom O'Malley	Vulcan South mine and rehabilitation	Vulcan South water storage options	Ongoing consultation
January 2022 to Current	Monthly meetings	BMA	Video Conference	BMA – Matt Ray, Tracey Drever, Vitrinite – Ben Dunlop	Updates on site and advancement of Vulcan south ML and EA applications	Interactions between companies, updates on progress, ML application	Ongoing consultation
24 March 2022	Meeting / Pre-lodgement presentation	DES	Vulcan Mine Site	DES personnel (Emma Burgess, Marijke Schuurs, Chelsea Engel, Jade Caldwell, Connor Shelton)/Dave Moss/Ben Dunlop	Project presentations, pre-lodgement overview of Vulcan South. Site visit.	Bulk Sample, BSP, CHPP + Rail, site tour, Vulcan South Project Pre-lodgement presentation.	Ongoing consultation

Consultation date	Consultation type	Stakeholder	Location	Attendees	Information Provided	Topics of discussion	Outcomes/ ongoing commitments
April – May 2022	Pre-lodgement consultation and application reviews	Department of Resources	Phone and e-mail	Mel Veti, Deborah Toon	Pre-lodgement discussion and ML application review	Vulcan South ML application	Application finalisation, submission and ongoing consultation